



The future of

PROSTHETICS

# Table of Contents

## PROSTHETIC FOOT RANGE

- S-Pace foot
- Grace foot



## FOAM COSMESIS

- Above knee foam cosmesis covering
- Below knee foam cosmesis covering



## COMPLETE SOLUTIONS

- Shuttle lock
- Universal Shuttle Lock
- Ortho Stockinette
- B K Kit



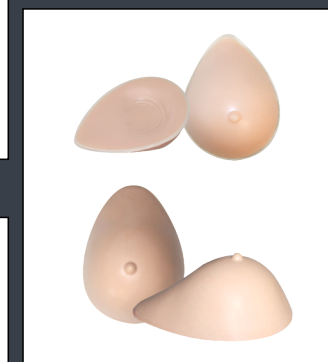
## CHILD RANGE

- Clubfoot brace
- Clubfoot shoes



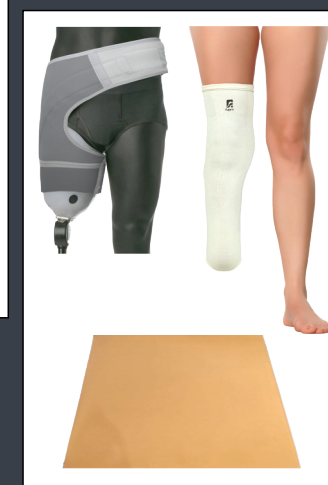
## WOMEN'S RANGE

- Silicone Breast prosthesis
- Featherlite Breast prosthesis



## SOFT PRODUCTS

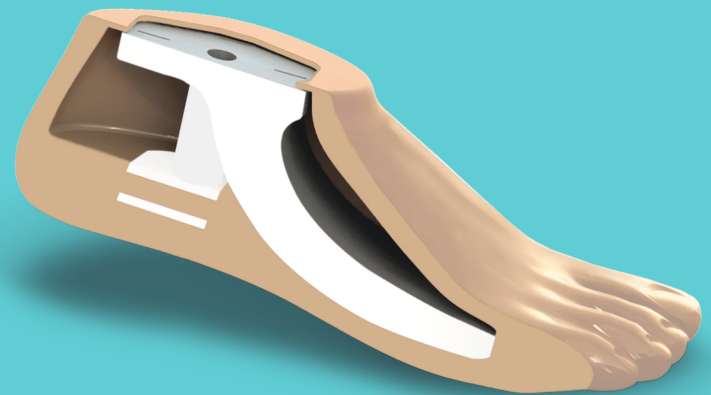
- TES belt
- Stump Socks
- Pedelin Foam



# Prosthetic Foot Range

## S-PACE Foot

The New age SACH



'S-PACE Foot' is a new age Sach foot that provides higher and better functionality than a regular Sach foot.

### High grade Polymer keel

- High ESR.
- Forward push to the patient while toe off.
- Less fatigue during walking.

### Extra soft heel strike

- Jerkless - Absorbs impact during heel strike.

### 2 weight classes in each foot size

- Higher performance as per patient's weight.
- Smoother gait.
- Less fatigue during walking.
- First time in the world SACH is being offered in 2 weight classes.

### 33% more dorsiflexion than normal SACH

- Natural ankle like flexibility.
- Smooth and effortless walk.

### Technical Information

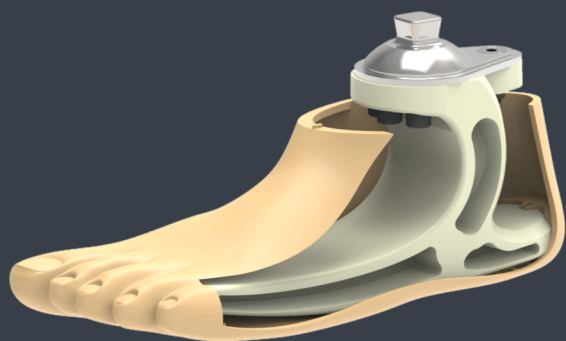
S. No.	Size (cms)	Weight class (kgs)	Product weight (gms)	Build Height (mm)
1	23	< 84	384	74.5
2	24	< 84	417	76.5
		84 - 104	447	
3	25	< 84	475	78.5
		84 - 104	494	
4	26	< 84	526	80.5
		84 - 125	576	
5	27	< 125	620	82.5



Warranty: 12 months, from the date of Fupro's invoice.

# Prosthetic Foot Range

## Grace foot



'Grace Foot' is a high grade elastomer prosthetic foot made to mimic natural foot functions.

### ISO 22675:2016(E) test cleared

#### Nature-like Flexibility

- Human ankle is soft and supple.
- While walking, it allows the tibia to flex more than 30°, a condition not achieved by other passive prosthetic feet.
- Grace Foot™ helps amputees reach higher values of flexion in all phases of stance.

#### Innovative material with high ESR

- Bio-inspired elastomeric polymer.
- High flexibility, upto 30 degree dorsiflexion.

#### Roll Over

- Biomimetic design.
- Single curve with uniformly varying stiffness offers a smoother walk.

#### Durability

- Tested for 20 lakh cycles as per ISO 22675:2016(E) specifications.
- Completely waterproof footshell.
- Footshell doesn't become powdery on storage for longer durations.

### Specifications

Weight*	593 grams
Build Height*	100 mm
Activity Level	K2-K3
Body Weight Class	< 64 < 64-84 < 84-104 kgs
Sizes	24,25,26 cms
Warranty**	24 months on keel, 6 months on cosmetic cover

\* For size 25 (64-84kgs) with cosmetic cover.

Size	Weight Class
24 cm	< 64 kgs
	64 - 84 kgs
25 cm	< 64 kgs
	64 - 84 kgs
26 cm	<64 kgs
	64 - 84 kgs
	84 - 104 kgs

Warranty: Keel & Adapter - 24 months and Footshell - 6 months, from the date of Fupro's invoice.

# Child Range

Orthotic device for correction and management of Congenital Talipes Equinovarus (CTEV) or ClubFoot deformity in infants.

## Clubfoot Brace

- Adjustment bar length to cater to multiple shoulder widths.
- Fine adjustment of foot angle (0-90) with 10 degrees adjustment.
- Quick release mechanism for easy application and removal of shoes.
- Secure locking-withstand torsion force of moving legs.
- Screws given allows the Doctor to use custom shoes.
- Durable polymer construction is lightweight and durable.

## Clubfoot Brace



## Clubfoot Shoes

### Anatomical shaped curved heel

- Best fit to the child
- Holes at the heel area provide visual aid to see if the child's heel is placed properly.

### Smooth & soft inner liner

- Superior Comfort
- Skin friendly
- Cushioning

### Durable stiff leather with soft inner padding

- Secure gripping
- Quicker correction
- Minimal chances of relapse
- Soft padding offers superior comfort and keeps the foot in place.

### 3 anatomically placed straps with buckles

- Ponseti based correction
- Tight fastening
- Not easily opened by child

### Stiff lightweight base with quick release mechanism

- Easy donning and doffing
- Caters to children upto 16 months
- Aesthetically appealing

### Flexible high ankle

- Prevents twisting of the child's foot.
- Best correction with minimum chances of relapse.

## Clubfoot Shoes



### Size chart for Clubfoot Brace

SIZE	INCHES	CENTIMETERS
Short	5.3 - 8.2	13.5 - 21
Long	7.6 - 12.8	19.5 - 32.5

Measure: Measure Shoulder width



Warranty: 12 months, from the date of Fupro's invoice.

### Size chart for Clubfoot Shoes

Size	Length (A) cm	Age (Month)	US	UK	EU
Size 1	8.5 - 9.5	2 - 6	2	1	17
Size 2	9.5 - 10.5	6 - 10	3	2	18
Size 3	10.5 - 11.5	10 - 16	4	3	19

Measure: Measure foot length (From Heel to Tip of Toe)



Warranty: 12 months, from the date of Fupro's invoice.

\*Brace and shoes can be bought separately.

# Foam Cosmesis

## Above knee foam cosmesis



Above knee foam cosmesis is an easily wearable foam covering to be used on top of the above knee prosthesis as a cosmetic layer to mimic the shape of the patient's leg.

### High performance polymer construction with durable fabric liner:

- Matches the softness of human skin.
- Lightweight & Odourless.
- Completely water-proof material.
- Does not tear easily.
- Doesn't allow bacteria to grow.
- Liner ensures protection of foam from knee joint.
- Appropriate color for best cosmetic appearance.

### Pre-formed anatomically accurate design:

- No grinding requirement.
- Ensures complete safety of clinicians from carcinogenic dust.
- 75% reduction in time due to easy 'Pull-up' application.
- Enables cleaner work environment.
- Available in Small, Medium and Large sizes to ensure best fit for all.

### Scientifically designed knee area:

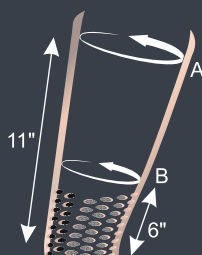
- Minimal interference to the knee joint due to smooth inner fabric.
- Hexagonal perforation ensures unrestricted flexion.
- Preflexed shape ensures freedom of movement.



### SIZE CHART:

	Small	Medium	Large
Circumference A (cm)	53	56	59
Circumference B (cm)	45	48	51
Circumference C (cm)	35	38	41
Circumference D (cm)	24	26	28
End-to-End Length (cm)	84	84	84

Tolerance of ±1 cm



### SIZE SELECTION GUIDELINES:

	Small	Medium	Large
Inner Circumference A	46	49	52
Inner Circumference B	39	41	44

Tolerance of ±1 cm

Measure: Find the closest 'Inner Circumference B' from the knee center to get the best size fit.

Warranty: 6 months, from the date of Fupro's invoice.

The below knee foam cosmesis is a foam covering made to be used for a patient that has been amputated from below the knee.

## Below knee foam cosmesis

### User centric top design:

- Different top circumferences in S, M and L sizes.
- Ensures best fit for all.
- Large cavity on the socket end allows router to go inside.

### User centric bottom design:

- Constant bottom circumferences to fit all foot sizes.
- Lower hole for gripping pylon.

### Tapered design:

- Easy to shape.
- Shaping time reduced by 30% (approx).
- Environment friendly; less wastage while grinding.

### High performance polymer construction:

- Completely water-proof.
- Doesn't allow bacteria to grow.
- Does not tear easily.
- Odourless.
- Matches the softness of human skin.
- Less sticking on the grinder.
- Appropriate colour for best cosmetic appearance.
- Long functional life with 6 months warranty.



Product Code	Measurements	Size	A (inches)	B (inches)	C (inches)
F1		L	17.8	12.8	16
		M	16.3	12.8	13
		S	15	12.8	9.3

Tolerance of  $\pm 0.3$  inches

Warranty: 6 months, from the date of Fupro's invoice.

# Complete Solutions

## TES belt



**TES Belt (Total Elastic Suspension) - A gunslinger designed belt secures the prosthesis and reduces overall fatigue.**

1. High Quality Latex free Neoprene - High stretch and durable.
2. Gunslinger Design - reduces abdomen discomfort & hip stress
3. Velcro - Strong and long lasting for maximum grip
4. Distal side: 360 degree Textured Neoprene grip - prevents socket rotation.
5. Better body integration, anti-roll, anti-bunch panel for comfortable & secure fit.
6. Reduced pull-down feeling provides more confidence.
7. Premium fabric on all outer boundaries prevents damage from cuts/ tears.
8. 4 size - S, M, L, XL

## Ortho Stockinette



**Stockinette is used as a cloth liner used for various purposes by P & O.**

### Ortho Stockinette

Multi purpose, versatile liner for various prosthetic and orthotic applications. A must have for every practitioner. Made from high quality fine stapled cotton.

- Hypoallergenic.
- Seamless build.
- High grammage durable fabric.

S. No.	Sizes (mm)
1	50
2	75
3	100
4	125

Warranty: 6 months, from the date of Fupro's invoice.



# Soft Products

## Stump Socks

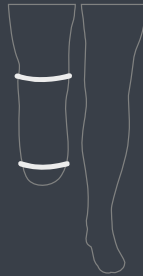
**Stump Socks are designed to protect the skin of the stump from any mechanical injury, abrasion or friction. It is anatomically shaped for an improved fit.**

### Features: :

- Extra soft and comfortable.
- Reduces friction and protects the skin
- Absorbs the sweat for a cool dry feel.
- Cushions any impact
- Compensate for shrinkage or swelling of the residual limb
- Provides a way to adjust the fit of the socket.
- Optimum Compression
- Reduces the discomfort associated with phantom pain.

### Size Chart:

Size	Top (in)	Bottom (in)
Small	8 - 11	5 - 8
Medium	11 - 14	7 - 10
Large	14 - 17	9 - 12
X-Large	17 - 20	11 - 14
Lengths* (in)		
Extra Short		10
Short		14
Regular		18
Long		22



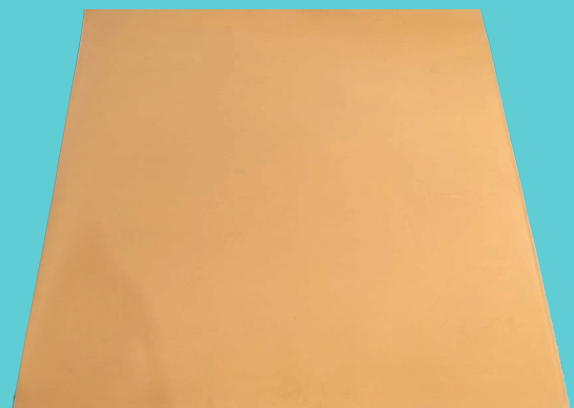
### Size Selection Guidelines:

Please select the correct size along with the respective Length. For e.g. if the patient's Top Circumference is 10 (in), Bottom Circumference is 6 (in) and the Length of the stump from the distal end to where the sock should be is approx 14 (in), then the suitable size is 'Small Short'.

### Pedlin Foam - Soft lining for fabrication of sockets with great thermoformable properties.

1. Size - 1m x 1m
2. Thickness - 6mm
3. Density : 130 kg/m<sup>3</sup>
4. Hardness : 35 shore A
5. Used as padding material for Prosthetic Sockets
6. Temp recommendation : 115 degrees (convection oven with fan / infrared oven)
7. Good thermoforming properties
8. Washable
9. Anti-bacterial properties

## Pedelin Foam



# Complete Solutions

## Shuttle Lock



**Shuttle lock is a locking system for pin based suspension that is fitted in the socket to attach it to the liner.**

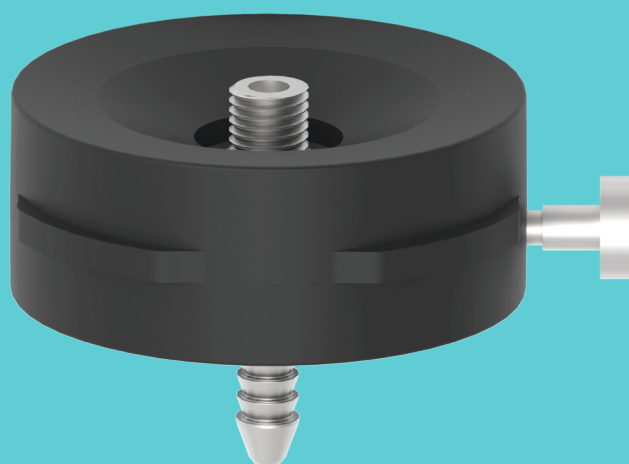
### Durable body

- Lightweight.
- High strength polymer for durable and functional use.
- Metal pin ensures high weight bearing capacity.
- Long functional life with 12 months warranty against breakage.

### Easy to use

- Self engaging, secure locking.
- Provides audible feedback for dependable intuitive use.
- Quick release mechanism which ensures don and doff with just a press of a button.

## Universal Shuttle Lock



**Shuttle Locks work on pin-lock mechanism & connects almost all the liners to the modular prosthetic sockets.**

### Universal Shuttle Lock -

- a) **Build Height** - 27mm
- b) **Diameter** - 69mm
- c) **Part weight** - 95 g
- d) **Weight bearing capacity** - 135 kgs.

2. **Body** - Superior quality polymer body.
3. Total surface bearing contact for maximum Prosthetic liners.
4. **Pin** - High grade SS with sound feedback during locking.
5. **Accessories** - Additional set of washers provided for best fit with maximum Liners.
6. Compatible with both transtibial & transfemoral sockets.
7. Compatible with 4 hole socket adapters.

**Below knee kits are a set of adaptors made with high quality aluminum used for appropriate fitting of the prosthesis.**

**Manufactured by Forging Process**

#### **Below Knee Kit- Draping Male Socket Adapter**

- Superior aesthetics with matt black finish.
- High grade corrosion resistant stainless steel alloy.

#### **Contents:**

- Aluminium pylon short (225mm).
  - SACH foot adapter with bolt ( $\text{\O}10\text{mm} \times 60\text{mm}$ ) / ( $\text{\O}10\text{mm} \times 90\text{mm}$ ).
  - Female tube clamp adapter.
  - BK draping male socket adapter.
  - Knee cap.
- 
- Long functional life with 12 months warranty against breakage.

## Below Knee Kit- Draping Male Socket Adapter



#### **Below Knee Kit- 4 Prong Laminating Adapter**

- Superior aesthetics with matt black finish.
- High grade corrosion resistant stainless steel alloy.

#### **Contents:**

- Aluminium pylon short (225mm).
  - SACH foot adapter with bolt ( $\text{\O}10\text{mm} \times 60\text{mm}$ ) / ( $\text{\O}10\text{mm} \times 90\text{mm}$ ).
  - Female tube clamp adapter.
  - BK 4 prong laminating socket adapter.
  - Knee cap.
- 
- Long functional life with 12 months warranty against breakage.

## Below Knee Kit- 4 Prong Laminating Adapter





Fupro Innovation (P) Ltd.  
Plot No. 169-170, Sector-82,  
Industrial Area, JLPL, Mohali,  
Punjab, India-160055.

[info@fupro.in](mailto:info@fupro.in)

[www.fupro.in](http://www.fupro.in)